

Single Stall Comfort Station

Model 4848EHDLD

Model 4848E

Model SJSPCS 600

Model SJSDCS 520

Single Stall Model 4848EHDLD – Top of the Line

1. Exhaust Fan – has separate on/off switch mounted on left wall.
2. Automatic Paper Towel Dispenser – 4 “C” Batteries are installed. Automatic eye is taped over for shipment. One complete towel roll is in dispenser, additional towel roll is in the consumables box packed in unit.
3. Mirror
4. Automatic Foaming Soap Dispenser – shipped empty, soap is included in the consumables box packed in unit.
5. Corner Sink with nine (9) second automatic water-saver faucet.
6. Wall Mounted Hand-Held Bidet
7. Studor Vent
8. Cistern – top mounted, water-saver flush for both heavy and light toilet usage.
9. Double GFI 100v (US) Electric Receptacle
10. Water Pressure Pump – contains a strainer with sight gauge. This pump will be used ONLY to draw water supply from a holding tank. Turn lever to “red” to utilize pump and turn lever toward “blue” for all other water sources.
11. P-Trap Toilet and Toilet Seat – toilet is fastened to the wall and the floor. Toilet waste line exits through the wall and can be connected to a holding tank, septic tank or sewer (mains).
12. Safety Fluorescent Light - switch on opposite wall
13. Clothes Hooks
14. Large Toilet Paper Holder - 100% recycled Paper



Model 4848 EHDLD Optional Self-Priming Automatic Water Pump with Filter and Sight Gauge

1. In-Line Strainer with Sight Gauge
2. Electrical Receptacle Control Box
3. Directional Valve – Turn toward red to use with holding tank water supply and turn valve toward the blue to use with pressurized municipal water or garden hose.

ALWAYS TURN PUMP OFF AT THE ELECTRICAL CONTROL BOX WHEN MOVING THE VALVE. NEVER TURN THE PUMP ON WHEN THERE IS NO WATER CONNECTION.

4. Optional Pump Assembly



Water Pump System



Waste Bin



Light/Fan Switch
Fire Extinguisher



Ceiling Mounted Smoke Detector

Model 4848EHDLD - Outside Rear View

1. Exhaust Fan Outlet
2. Electrical Service Box
3. Water Source Inlet
4. 3" (7.6cm) Waste Outlet

Model 4848EHDLD - Options

This Model can have a window installed for light and comfort in the upper left wall.

This Model has several different floor models available.

This Model has several different floor covering options.



Model 4848EHDLD - Dimensions

1 inch (2.54cm) Walls

Outside: 51" (129.5cm) x 51" (129.5cm)

Runners: 52" (132cm) wide x 60" (152.4cm) x 95" (241.3cm) tall

Inside: 49" (124.4cm) x 49" (124.4cm)

Door: 36" (91.4cm) x 80" (203.cm)

The dimensions can be changed to gain shipping economies of scale.

Porta John® Patented Comfort Stations and/or Showers

Choose a Ground Level Facility for Your Site or Event:



Comfort Station Model 4848

4' x 4' x 91"

Ceramic Sink
Ceramic P-Trap Toilet
Soap Dispenser
Paper Towel Dispenser
Inside Door Lock
9" Toilet Roll Holder



Comfort Station Model SJCS600

44" x 44" x 89"

Ceramic Sink
Ceramic P-Trap Toilet
Soap Dispenser
Paper Towel Dispenser
Inside Door Lock
9" Toilet Roll Holder



Comfort Station Model

SJSDCS520
44" x 44" x 89"

Ceramic Sink
Ceramic P-Trap Toilet
Soap Dispenser
Paper Towel Dispenser
Inside Door Lock



Model HT304

300 Gallon Holding Tank

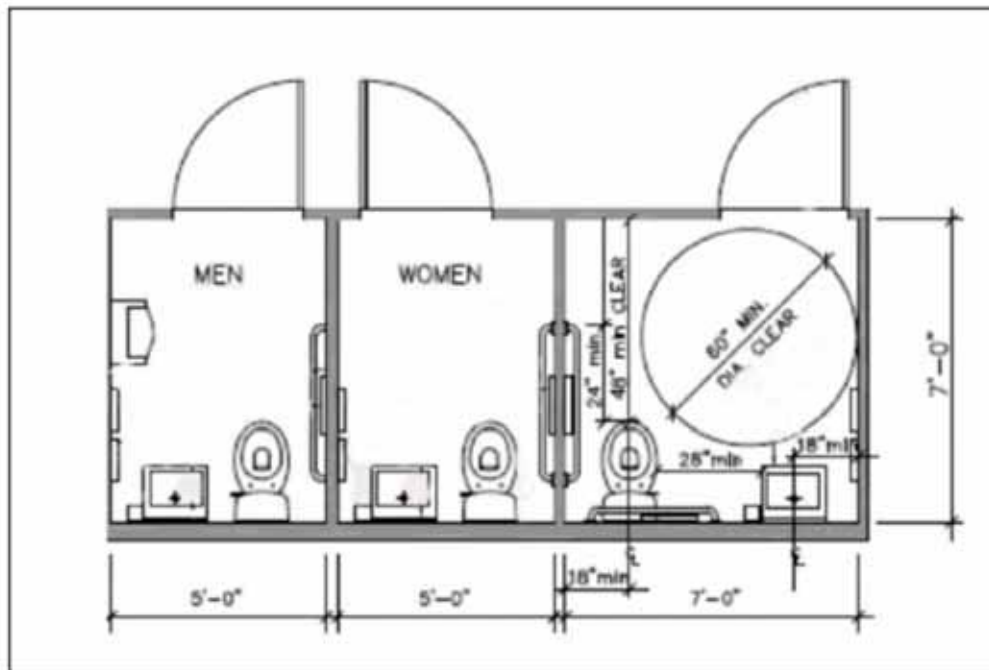
All Comfort Stations can be
Connected to Holding Tank,
Septic or Sewer

How it Works

Holding Tank

Water





Stall Dimensions

Meets or Exceeds - ADA ICC/ANSI A117.1 Code - California Building Code

The Single and Multiple Lavatory Buildings are Re-Locatable for Natural Disasters.



Single Stall Lavatory
Building Dimensions:
7' x 7' x 7' 5"



Shower/Toilet
Combination



ADA Compliant
Lavatory Building

Portable Buildings

Lavatory – Shower - Toilet



All of the Lavatory and Shower Buildings have 4" Steel Frame with Enclosed Tine Ports for Mobility. All Buildings are Ground Level with Ceramic Fixtures - Electricity Internal Plumbing - Smoke Detectors - Fire extinguishers - Mirrors - Foaming Hand Soap Dispensers - Automatic Paper Towel Dispensers - 9" Toilet Roll Holder - Air Conditioning & Heat

Single – Dual and Three Stall Buildings
Dimensions: all are 7'5" High
7' x 7' - 7' x 12' - 7' x 17'

Water And Waste Connection



Holding Tank For Waste Disposal



Water Connection Can be
A Garden Hose – Hard
Plumbed or Water Tank

Lavatory and Shower
Buildings can be
Plumbed to a Sewer or
Septic Tank

