

Porta John® References & Products

Porta John® is a Registered Trademark

www.OilfieldSanitation.com www.Toilets.com www.EmergencyToilets.com
www.PortableRestrooms.com www.ToiletTrailers.com www.ToiletSales.com



Atlanta Comm. for the Olympic Games

LETTER OF TRANSMITTAL #0046

PROJECT TITLE: Temporary Portable Facilities

To: Atlanta Comm. for the Olympic Games

From: Porta-John, Inc.

DATE: 6/21/96

WE ARE PROVIDING YOU:

☐ Shop drawings ☐ As-built ☐ Separate serial file ☐ No following serial

☐ Copy of letter ☐ Photo ☐ Sketch ☐ Specification

☐ For Study Only ☐ Change order ☐ Other

Page 1

Serial	DATE	REVISION	DESCRIPTION	STATUS
1	6/21/96		EXHIBITED AGREEMENT between Atlanta Committee for the Olympic Games (ACOGG) and Porta-John of America, for Portable Toilets at all Venues	

Please process and return to us later than:

REMARKS: This original, executed document should be returned to your file.

DATE:

Copies to: Porta-John Corporation, Portable Toilet Commission, CONSTRUCTION Office

CHECK YES

APPROVED: *[Signature]*

Atlanta 1996

June 21, 1996

Don White
Porta-John of America, Inc.
50033 Pryor Rd.
Olney, MD 20845

Subject: Letter of Transmittal
Olympic Portable Toilet Contract

Dear Mr. White:

Please find enclosed four (4) copies of the Contract for Portable Toilets for the 1996 Summer Olympic Games. Please return all four (4) signed originals to:

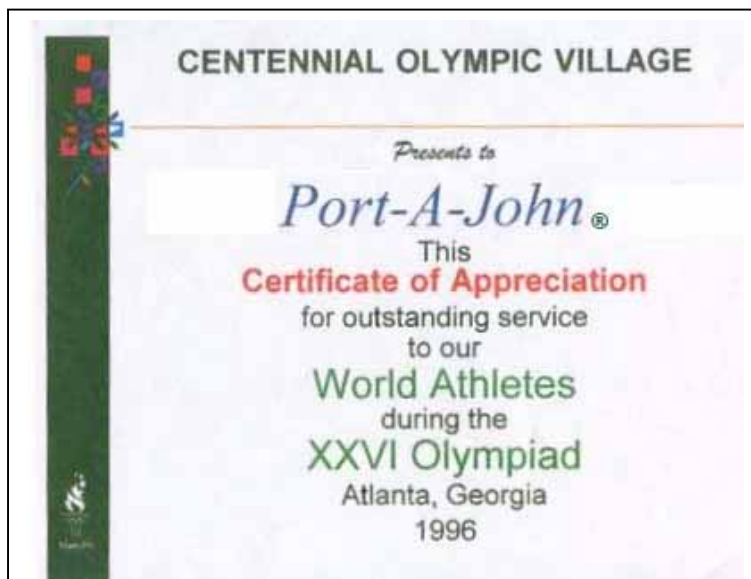
Mr. William J. Moss
Managing Director, Construction Department
The Atlanta Committee for the Olympic Games
220 Williams Street, Suite 2000
Atlanta, Georgia 30303

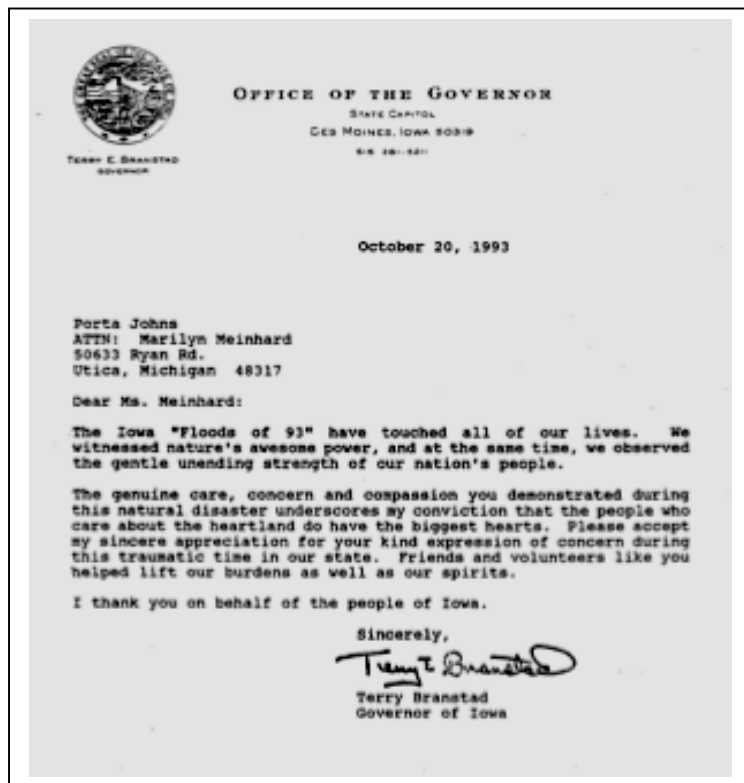
In addition, this letter authorizes Porta-John of America, Inc. to proceed with the Scope of Work for each venue and event included within the Contract.

Sincerely,
[Signature]
William J. Moss
Senior Vice President
Construction

cc: Bill Johnson
John Hancock
Dick Larson

During the 1996 Olympic Summer Games in Atlanta, Georgia
our Porta John® Patented Folding Portable Toilets
were used exclusively.





Customer E-Mail Samples:

"I am having my wedding on the 4th of July 2008. The reception will be held at my parents house in xxxxxxxx, xx. It will be an outdoor reception and I am looking into renting a portable toilet as my parents have a septic tank. I understand the need for a portable toilet however I am worried about how unsightly the traditional portable toilet is. While reviewing your website I saw model number ths7516 which was a men and women's bathroom side by side. Would this be something that would be a possibility? If so how much would it cost to rent for the day? What other details would be involved? Please advise. Thank you."

----- Forwarded Message

From: Patrick Barrett <XXXXXXXXXXXX>

Date: Thu, 17 Jan 2008 21:24:46 +0100

To: <info@toilets.com>

Subject: Toilets for Yacht Club Port de Plaisance

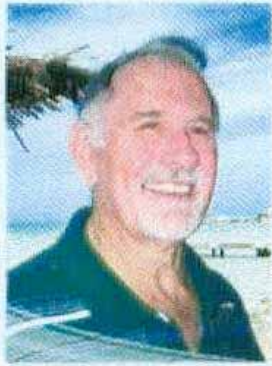
Well just to up-date you, the toilets reached St. Maarten about December 15. We spotted them on December 23rd. We eventually had them in place by early January, hooked them up and can now say that they are in working order. However, since they look so good, we are using them as show pieces(not for use by the general public)! But seriously they certainly live up to the advertisements and we will promote your product to anyone.

Thank you very much for your efforts to get them to us.

Sincerely

Patrick

ABOUT US



Patrick Barrett,
Director of Operations

Winter Rendezvous for Megayachts

With nearly half of the marina's alongside and Mediterranean-style berths available for megayachts, the Yacht Club Port de Plaisance has become a popular rendezvous for professionally-crewed yachts that migrate to Sint Maarten seeking a strategic winter base within the Lesser Antilles, extending from the Virgins to Venezuela.

Direct Air Links to North America and Europe

Sint Maarten/St. Martin enjoy direct air links to Europe, North America, and the Caribbean via the Princess Juliana International Airport, the island's only runway capable of accommodating wide-bodied passenger jets, as well as private aircraft and cargo planes. Complete with heliport and facilities for private jets, this cosmopolitan Caribbean hub (destination code SXM) serves as a convenient FBO for passengers joining vessels throughout the region.

Gateway to Leeward Islands Cruising Grounds

Regarded by experienced yachtsmen as the finest anchorage in the Caribbean, the 12-square-mile Simpson Bay Lagoon -- that spans the Dutch-French border and is accessed via either the Simpson Bay Bridge (Dutch Side) or the Sandy Ground Bridge (French Side) -- is a convenient operational base for Leeward Island-hopping

charteryachts with itineraries that include port calls on Anguilla, St. Barth lemy, Saba, St. Eustatius, St. Kitts, Nevis, and Antigua.

Caribbean's Finest Freeport

A major tourism destination with a reputation as the 'Duty Free Shopping Mecca' of the Caribbean, this 37-square-mile 'Friendly Island' charms visitors with its spectacular beaches, tropical climate, and alluring mix of European and Caribbean cultures.

Its status as a completely duty-free and tax-free port, however, is the feature that most excites visiting yachtsmen, making it an attractive destination for megayacht provisioning, repairs and refits. In many instances, marine parts and equipment may be purchased locally for less than they would cost in the U.S., Canada, or Europe. Goods not immediately available can easily be ordered and shipped.

Sint Maarten's excellent air and sea freight links provide daily access to gourmet provisions, marine equipment, domestic as well as foreign parts and products, without the need for paying taxes or import duties -- or experiencing the delays usually associated with their collection.

Region's Premiere Yacht Service Center

Combined with its reputation for superior customer service and full range of modern marina facilities, the Yacht Club Port de Plaisance's popularity among captains is attributed, in part, to its proximity to a superb array of high quality technical services for yacht maintenance, repair, and refit that have established Sint Maarten as one of the Caribbean region's premiere service centers for professionally-crewed yachts, challenged only by major stateside yachting capitals like Ft. Lauderdale and Miami. There's an ample supply of marine tradesmen, including technicians, electricians, refrigeration-air conditioning specialists, as well as skilled day workers.

City of Pawnee City
445 6th Street
PO Box 206
Pawnee City, Nebraska 68420

August 6, 2008

To Whom it May Concern,

The City of Pawnee City highly recommends Porta-John Industries, Inc and the high degree of excellence that they put into the building and construction of their lavatory units.

During the past several years, Pawnee City has made many nice improvements to its campground. Numerous events occur here during the year to include birthday parties, weddings, class reunions and family picnics. The City has used services of a porta-potty provider to supply a restroom facility at the site. Availability of these types of services was limited in our rural community as providers are not willing to travel this far to service a porta-potty. Because of this, City officials decided to look for a flushable toilet system for the City's fishing, camping/picnic area. City staff researched online possibilities and found Porta-John Industries, Inc at www.toilets.com.

The City purchased a Freitag 4848-57 single stall ADA Compliant lavatory from Porta-John Industries. The lavatory arrived as a complete portable unit, ready to be placed on site. The City has been extremely pleased with the entire ordering process, delivery and quality of the company and the product they sell. City officials and the community have left positive comments about the new restroom facility. It has been a wonderful addition to our community.

With highest regards,

City of Pawnee City, Nebraska

Accomplishments

The City of Pawnee City wants the Southeast District Health Department to know just how much we appreciated the \$5000 Mini Grant that the department awarded to the City. The flushable toilet system that the City has installed out at The Peewendena Campground has already made the area a much healthier, cleaner place for those using our campground. And once again, thank you for helping us fund this project! The Southeast District Health Department is definitely serving this community well!

City of Pawnee City



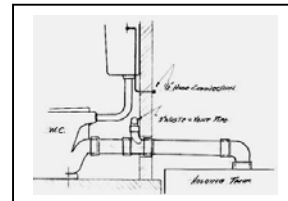
Partial Display of Porta John® Branded Standard Portable Toilet Products

"Out-Standing in The Field"®



Drop Tank Toilets (Patents & Trademarks Issued and Pending)

"When a Portable Toilet is not an Option"™



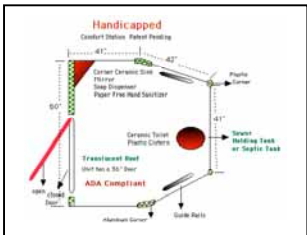
How They Work



7,000,000 Page Views Annually



Single Comfort Station (Patents & Trademarks Issued and Pending)



Comfort Station ADA



Drop Tank ADA



Single ADA Lavatory (Patents & Trademarks Issued and Pending)



Hand Wash Station

www.handwashstation.com



www.sanitizers.com
www.handsanitizers.com



www.waterlesstoilets.com



www.toteajon.com



www.showerlavatory.com



www.portableshowers.com



Some Pumping Systems Manufactured by Porta John®



www.portablebuildings.com

www.womenslavatory.com

Patented Multiple and Single Stall Ground Level Fresh Water Flush & Hand Wash Stalls

Be a Part of Our World Recognized Brand

Over 40 Years' Experience in the Sanitation Industry

Proven Proprietary Product Line

Premier Internet Marketing Company

Industry Leading Green Footprint and Safety Features

Industry's Most Hygienic Sanitation Product Line

Contact Us and You, Too, Can Be:

"Out-Standing in The Field"®



www.menslavatory.com



www.showerlavatory.com



Patented Products
Eco-Friendly
Hygienically Safer Than a Portable
Toilet
"When a Portable is Not an Option"

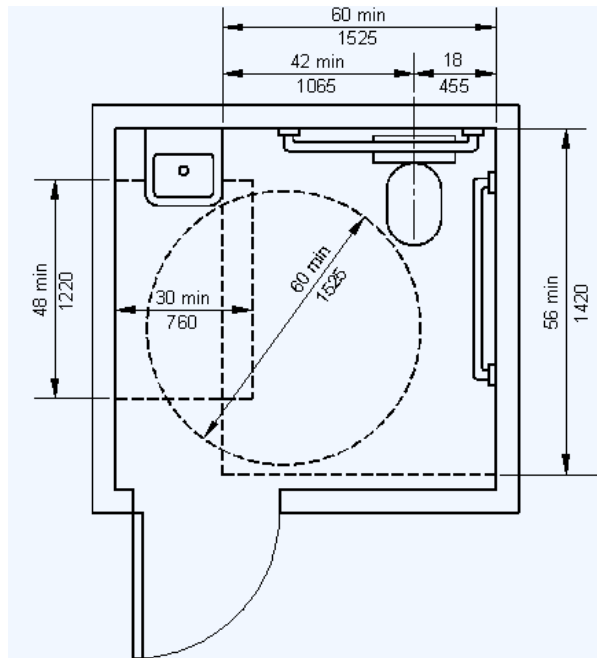


Freitaq 4848 Top View

Front View

www.handicappedtoilet.com

ADA Complaint Stall Dimensions



Meets or Exceeds - ADA ICC/ANSI A117.1 Code – California Building Code

Standard Safety Features

STANDARD SAFETY FEATURES:



Fire Extinguisher



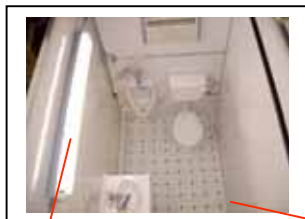
Smoke Detector



Door Locks/Deadbolt Locks



ADA Handle



Safety Light

info@toilets.com

Non-Skid Flooring



Emergency Mobile Sanitation System As Required

Mobility



Fig. 1 - Picking Up By Tine Ports



Fig. 2 - Tine Ports (Steel Frame)

Dimensions Bldg Shown: 12' 3" x 7' x 7' 5" High
Standard Dimensions: 10' 3" x 7' x 7' 5"

Lavatory Buildings Can Be Relocated for Disasters



Fig. 3 - Preparing To Ship



Fig. 4 - Loaded on Trailer



Fig. 5 - Easy Ground Level Connection

Toilets.com, Inc.

Phone: 1-800-521-6310 Fax: 1-800-437-9220

E-mail: info@toilets.com Web Site

www.toilets.com